

The Promenade at Elk Grove

10305 Promenade Parkway, Elk Grove, CA 95757



Property Highlights

79.05 Total Acres

169,554 5 Mile Population

- Regional trade-area in excess of 300,000 people.
- The adjacent Southeast Policy Area encompassing 1,200 acres anticipates as many as 4,160 dwellings, a potential population increase of over 15,000 people and as many as 27,000 employees.
- The proposed Outlet Collection is designed for over 600,000 square feet of "destination" retail.
- The Wilton Rancheria Tribe has proposed a large project which will be anchored by an Indian Casino and include a 12 story (302 room) hotel, a 100,000 square foot gaming floor, over 30,000 square feet in ballroom and convention space, a Spa, incidental retail and high-end restaurants.



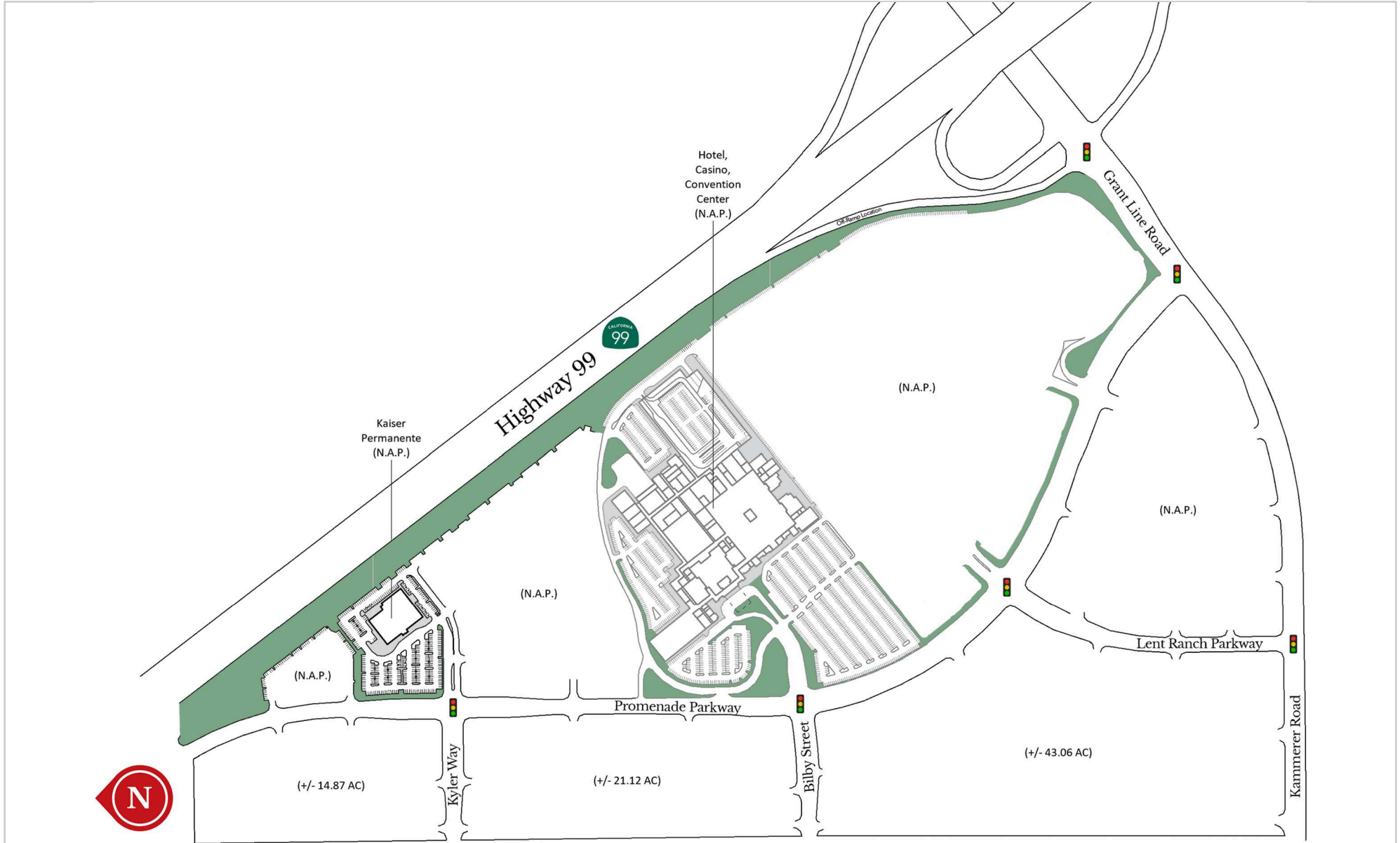
Demographics

| | 1-Mile | 3-Mile | 5-Mile |
|---------------|-----------|-----------|-----------|
| Population | 7,479 | 66,036 | 169,554 |
| Households | 2,191 | 20,361 | 51,542 |
| Avg HH Income | \$138,509 | \$151,753 | \$142,867 |

Source: Esri, 2024

The Promenade at Elk Grove

10305 Promenade Parkway, Elk Grove, CA 95757



The Promenade at Elk Grove

10305 Promenade Parkway, Elk Grove, CA 95757

Current Tenants