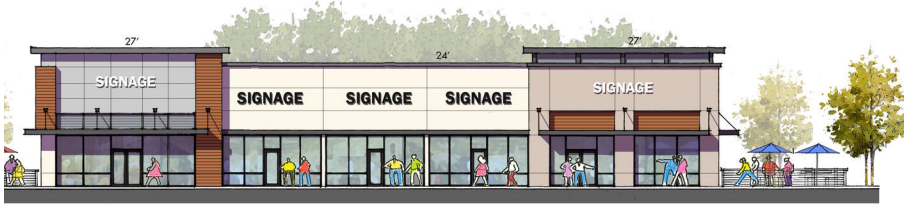


# Delta Shores South Satellite

Cosumnes River Boulevard and Delta Shores Circle S, Sacramento, CA 95832



NORTH ELEVATION



WEST ELEVATION



SOUTH ELEVATION



EAST ELEVATION



WEST ELEVATION



SOUTH ELEVATION



EAST ELEVATION



NORTH ELEVATION

## Demographics

	1-Mile	3-Mile	5-Mile
Population	3,703	91,110	298,055
Households	930	29,112	98,067
Avg HH Income	\$91,404	\$108,829	\$107,467

Source: Esri, 2022

## Property Highlights

13,800 Gross Leasable Area

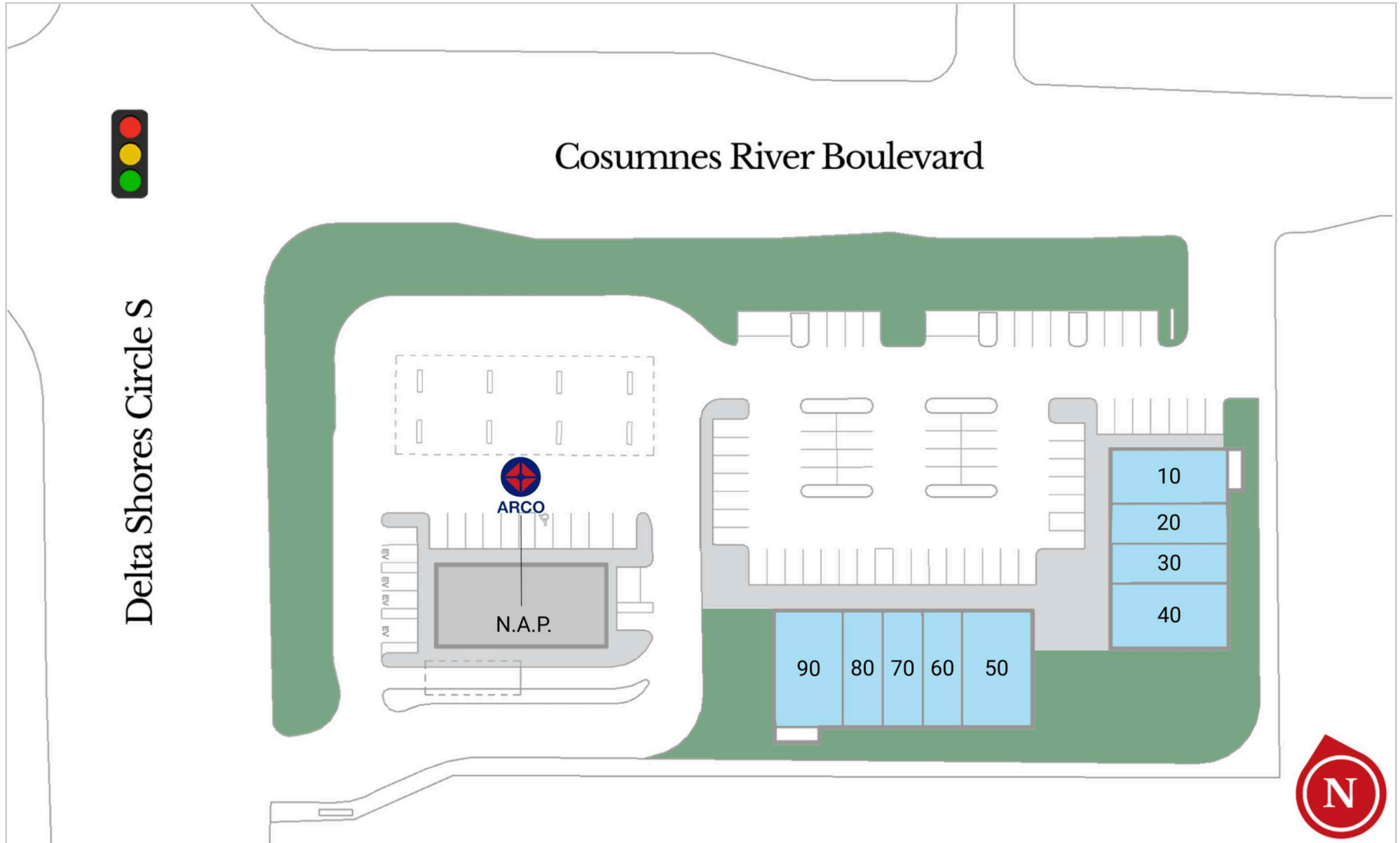
1.86 Total Acres

298,055 5 Mile Population

- Ideally located off I-5 at Delta Shores Circle South and Cosumnes River Boulevard, with easy access to nearby communities.
- Delta shores is an 800-acre master planned community in the heart of South Sacramento.
- High visibility shop space available.
- Premier destination in the Sacramento region featuring best in class community and lifestyle retailers, services and restaurants.

# Delta Shores South Satellite

Cosumnes River Boulevard and Delta Shores Circle S, Sacramento, CA 95832



# Delta Shores South Satellite

Cosumnes River Boulevard and Delta Shores Circle S, Sacramento, CA 95832

## Current Tenants

## Available/Coming Soon

10	Available	1,600 SF
20	Available	1,200 SF
30	Available	1,200 SF
40	Available	2,000 SF
50	Available	2,100 SF
60	Available	1,200 SF
70	Available	1,200 SF
80	Available	1,200 SF
90	Available	2,100 SF