

Pico & Bundy

12121 W Pico Boulevard, Los Angeles, CA 90064



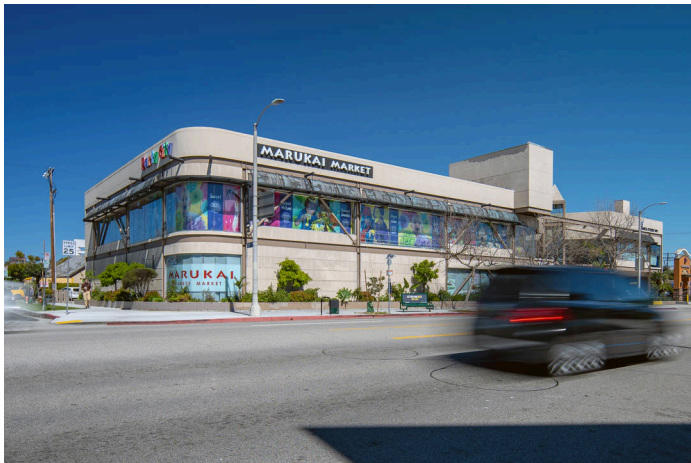
Property Highlights

31,499 Gross Leasable Area

0.81 Total Acres

590,498 5 Mile Population

- A 31,499 square foot shopping center benefiting from the high street traffic of Pico Boulevard and Bundy Drive which are both major commuter arteries.
- Located off the 10 and 405 freeways and the Metro Expo Line.
- Draws from a population within a 5-mile radius of 590,000 with an average household income of \$139,000.



Demographics

	1-Mile	3-Mile	5-Mile
Population	31,755	347,104	590,498
Households	14,709	164,149	269,205
Avg HH Income	\$114,557	\$128,799	\$139,389

Source: Esri, 2019

Pico & Bundy

12121 W Pico Boulevard, Los Angeles, CA 90064



Pico & Bundy

12121 W Pico Boulevard, Los Angeles, CA 90064

Current Tenants

1	Marukai Market	12,952 SF	110	Dance Studio No 1	5,290 SF
105	Cornerstone Music Conserv...	3,280 SF			

Available/Coming Soon

101	Available	9,977 SF
-----	-----------	----------