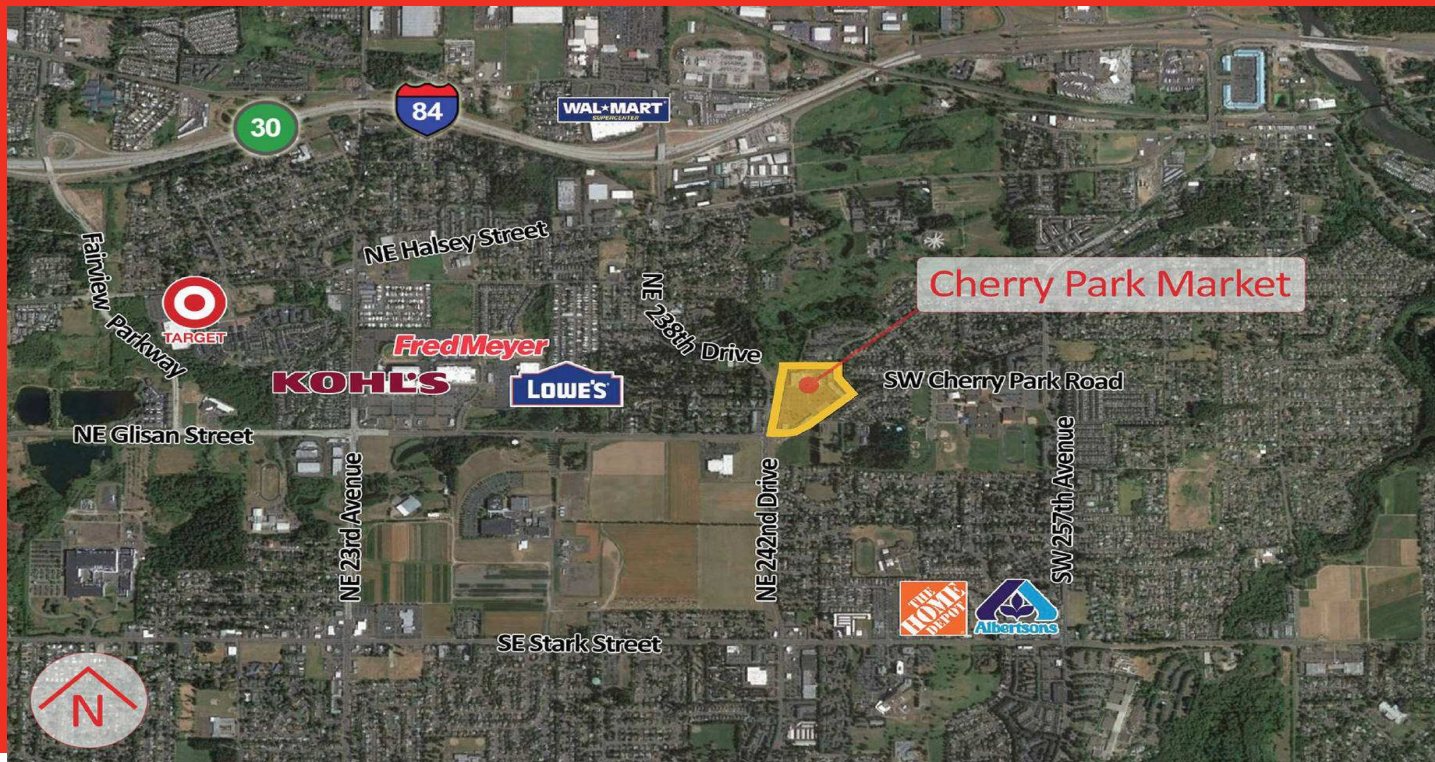


CHERRY PARK MARKET CENTER

2457 SW Cherry Park Road, Troutdale, OR 97060

Merlone Geier
Partners



FEATURES

Anchored by a 55,000 square foot Safeway supermarket.

Located in the Portland metropolitan area.

Excellent visibility on the corner of NE 238th Drive and SW Cherry Park Road with high daily traffic counts.

Convenient freeway access to Interstate 84.



DEMOGRAPHICS 2016

	<u>1 Mile</u>	<u>3 Mile</u>	<u>5 Mile</u>
Population:	15,587	86,599	204,664
Daytime:	5,942	33,799	60,959
Household:	5,309	31,925	73,641
Average Household Income:	\$68,458	\$66,456	\$71,964



STEPHANIE BOWLDS

206/602-3606

sbowlds@merlonegeier.com

CHERRY PARK MARKET CENTER

2457 SW Cherry Park Road, Troutdale, OR 97060

Merlone Geier
Partners



TENANT INDEX

1	Safeway	55,164 SF	10	Ten Nails	1,000 SF	24	Wu's Garden Restaurant	2,200 SF
2	Dollar Tree	11,296 SF	11	Perfect Look Salon	1,300 SF	25	AVAILABLE	1,250 SF
3	River of Life Lutheran Church	3,577 SF	12	OnPoint Community Credit Union	3,000 SF	26	Cherry Park Dental Clinic	2,100 SF
4	U.S. World Class Taekwondo	3,256 SF	13	Multnomah Country Library	6,000 SF	27	Tan Republic	1,369 SF
6	AVAILABLE	1,518 SF	16	AVAILABLE	2,169 SF	28	A Shot in The Dark	1,200 SF
7	J Gelati	900 SF	17	El Tapatio	3,000 SF	30	Subway	2,200 SF
8	Cherry Park Cleaners	1,300 SF	18	AVAILABLE		32	McDonald's	2,871 SF
9	AVAILABLE	1,400 SF	22	Godfather's Pizza	3,445 SF	33	US Bank	3,680 SF
			23	Dotty's Deli	1,500 SF			

PROJECT SUMMARY

Site Area	+/-16.58 AC +/-722,225 SF
Building Summary	
Gross Leasable Area	+/-116,695 SF

STEPHANIE BOWLDS
206/602-3606
sbowlds@merlonegeier.com